

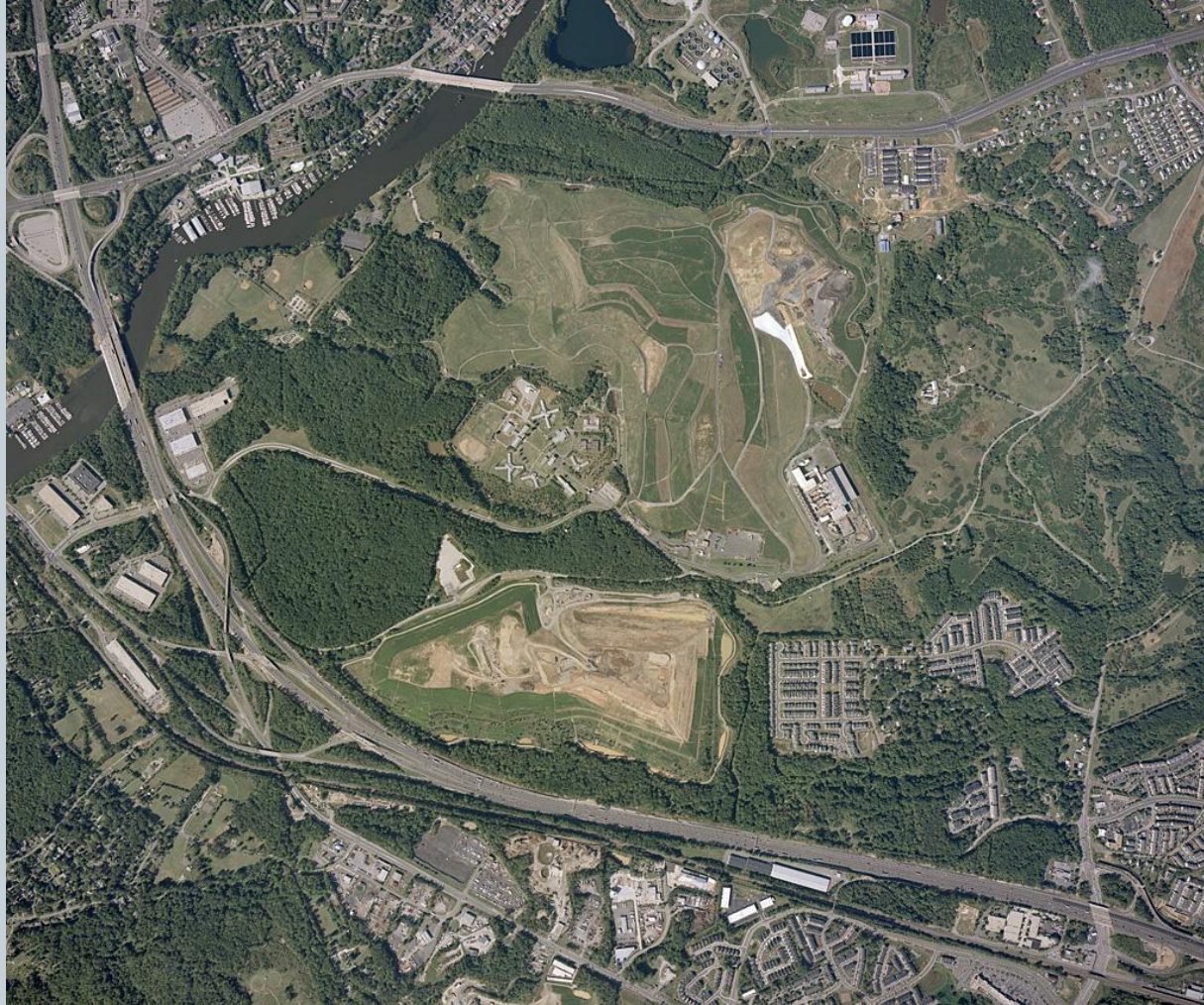
I-95 Landfill Interim Use

1



I-95 Sanitary Landfill

2



Introduction

3

- History/ MOU between jurisdictions
- Operation/Permit 103 VDEQ
- Federal Facility Compliance Act
- Closure of MSW Landfill
- Closure Post/ Closure Care
- Interim use

History/MOU

4

- The I-95 Resource Recovery Land Reclamation and Recreational Complex is operated under memorandum of understanding of 1981 between DC, Alexandria, Arlington and Fairfax County. MOU includes the establishment of Energy Resource Recovery facility, a Regional Park and environmentally sound disposal of solid waste.

Operation/ Permit 103 VDEQ

5

- Fairfax County took over operation of I-95 Landfill complex from the District of Columbia during 1982.
- Presently, the facility operates under the enterprise fund system.
- During 1988 the facility permit was amended to establish an incinerator ash disposal facility.
- Capping of MSW portion (260 acre) of landfill began during 1992 and was completed by 2008 and approved by VDEQ.

Post Closure Care

6

- VDEQ regulations requires post closure care for 30 years after the of final closure.
- Since the County has one permit for the entire facility post closure care can not begin until the ash monofill is also capped.
- Post closure care will begin after placement of cap over the ash monofill area (after 2041).
- The County will continue to maintain the MSW capped areas during the interim period.

GOAL

7

- Potential interim use of the property for 20-25 years over the interim period
- Long term use recreational and other options per MOU between the jurisdictions
- Post closure care
- Income for post closure care.

Feasibility Study

8

- Data Collection
- Site Visit
- Visual Impact Analysis
- Site Analysis
- Recommended Areas for Reuse
- Opportunities and Constraints



Opportunities and Constraints

| Reuse Options | Ash Landfill Operators | Landfill Gas Collection System | Existing Landfill capping system | Existing Stormwater control features | Potential Settlement | Open Space with Slopes Less Than 10% | Open Space with Slopes Greater Than 10% | Existing Access | Compatibility with adjacent land use | Solar Aspects/sun angles | Availability of Utility/Water Service | Zoning |
|---------------------------------|------------------------|--------------------------------|----------------------------------|--------------------------------------|----------------------|--------------------------------------|---|-----------------|--------------------------------------|--------------------------|---------------------------------------|--------|
| • Crop Harvesting | | | C | C | C | | O | C | C | | O | O |
| • Hay/Straw for Baling | | | C | C | C | | O | O | C | | O | O |
| • Sunflowers-Biodiesel | | | C | C | C | | O | O | C | | O | O |
| • Green Houses | | | | | | | O | C | C | | O | O |
| • Wholesale Container Nursery | | | | | | | O | C | C | | | |
| Renewable Energy | | | | | | | | | | | | |
| • Solar | | O | | | | C | O | O | | | O | |
| • Wind | | O | | C | C | | C | | | | | |
| • Landfill Gas Collection | | | | | | | | | | | | |
| • Geothermal | | | | | | | | | | | | |
| • AG-Fuel | | O | C | C | C | | O | C | C | | O | O |
| Miscellaneous | | | | | | | | | | | | |
| • Vehicle/Boat/RV Storage | | | | | | | | C | | O | | |
| • Granular Materials Processing | | | C | | | | | C | C | O | | |
| • Composting Facilities | | | C | | | | | | C | | | |
| • Construction Staging | | | C | | | | | C | C | | | |

O OPPORTUNITIES
C CONSTRAINTS

Opportunities and Constraints – continued

| Reuse Options | Ash Landfill Operators | Landfill Gas Collection System | Existing Landfill capping system | Existing Stormwater control features | Potential Settlement | Open Space with Slopes Greater Than 10% | Open Space with Slopes Less Than 10% | Existing Access | Compatibility with adjacent land use | Solar Aspects/sun angles | Availability of Utility/Water Service | Zoning |
|-----------------------------------|------------------------|--------------------------------|----------------------------------|--------------------------------------|----------------------|---|--------------------------------------|-----------------|--------------------------------------|--------------------------|---------------------------------------|--------|
| Active Recreation (Future) | | | | | | | | | | | | |
| • Athletic Fields | C | C | C | C | C | | O | C | O | O | | O |
| • Golf Course | C | C | C | C | C | C | O | | O | O | | O |
| • Driving Range | | | C | C | C | | O | | O | O | O | O |
| • Ski Slopes | | | | | | | | | | | | |
| • Sledding Slopes | | | | | | | | | | | | |
| • Kite Flying | | | | | | | | | O | O | | |
| • Model Airplanes | | | | | | | O | | O | O | | |
| • Children's Play Areas/Equipment | | | | C | | | O | | O | O | | |
| • Skateboard Park | | | | C | | C | O | O | O | O | | |
| • Paintball | | | | | | | O | O | O | O | | |
| • BMX Facility | | | | C | C | | O | O | O | O | | |
| • Bicycle/Mountain Bike Trails | | | | C | C | O | O | O | O | O | | |
| • Skeet Shooting | | | | | | | O | O | O | O | | |
| • Target Shooting | | | | | | | O | O | O | O | | |
| Passive Recreation | | | | | O | | O | O | O | O | | |
| • Amphitheater | | | | C | | C | O | O | O | O | | |
| • Equestrian Trails | | | | C | C | | O | O | O | O | | |

 OPPORTUNITIES
 CONSTRAINTS

Opportunities and Constraints – continued

| Reuse Options | Ash Landfill Operators | Energy Resource Recover Facility Operations | Existing Landfill Gas Collection System | Existing Landfill capping system | Existing Stormwater control features | Potential Settlement | Open Space with Slopes Greater Than 10% | Open Space with Slopes Less Than 10% | Existing Access | Compatibility with adjacent land use | Solar Aspects/sun angles | Availability of Utility/Water Service | Zoning |
|--------------------------------------|------------------------|---|---|----------------------------------|--------------------------------------|----------------------|---|--------------------------------------|-----------------|--------------------------------------|--------------------------|---------------------------------------|--------|
| • Walking/Jogging Trails | | | | | | O | | O | O | O | O | | |
| • Exercise Stations | | | | | | | | O | O | O | O | | |
| • Educational/Interpretive Centers | O | O | O | O | O | C | O | O | O | O | | | |
| • Pavilions/Picnic Areas | | | | | O | C | O | | O | O | | | |
| • Boat Launch | | | | | | | | | | | | | |
| • Dog Park | | | | | | | | | | O | O | | |
| • Summer/Day Camp | C | C | C | C | | C | O | O | O | O | | | O |
| Natural Resource/Agricultural | | | | | | | | | | | | | |
| • Habitat Restoration | | | | | | | | | | | O | | |
| • Compensatory Wetlands | | | | | | | | | | | | | |
| • Salt Marsh Restoration | | | | | | | | | | | | | |
| • Native/Ecological Restoration | | | | | | | | | | O | | | |
| • Botanical Gardens | | | | | | | | | | O | | | O |

 OPPORTUNITIES
 CONSTRAINTS